

BOL SERIES Outdoor Lighting

BOL-42-S-C-C-MCTP-BR

42" Square Bollard



Selection:

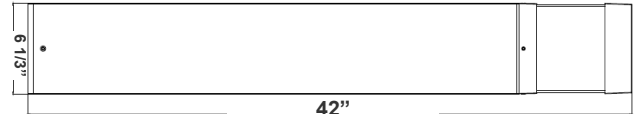


Customer Name: _____

Project Name: _____

Note: _____

Type: _____



42" (W) x 6 1/3" (H)

Bollards are designed for walkways, entrance ways, drives and other small-area lighting applications where low mounting heights are desirable

Features

- Corrosion Resistant Aluminum for Exterior
- Samsung 2835 LED Chips
- Wattage & CCT Selectable Switches inside fixture
- 7-Year Warranty

Technical Specifications

Electrical:

- Voltage: 120-277VAC
- Wattage: 12W-16W-22W
- Power Factor: >0.9
- Efficacy: 130 LPW

Lighting:

- Wattage & CCT Selectable Switches inside fixture
- Lumens: 2970LM Max.
- Color Temperatures: 3000K/4000K/5000K
- Color Rendering Index: CRI ≥ 70
- Beam Angle : 360°
- Lifespan: 70000 Hours

Mechanical:

- Flat Top with Cone Reflector & Frosted Lens
- Corrosion Resistant Aluminum for Exterior
- Mounting Accessories & Anchor Bolts Included (7-1/2" long)
- Operating Temperature: -40°F to 113°F
- 7 Years Warranty
- IP Rating: IP65, Wet Locations

Applications:

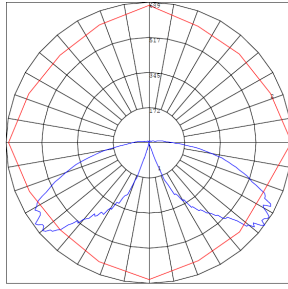
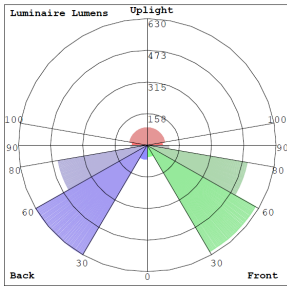
- Bollards are designed for walkways, entrance ways, drives and other small-area lighting applications where low mounting heights are desirable

Other Models:

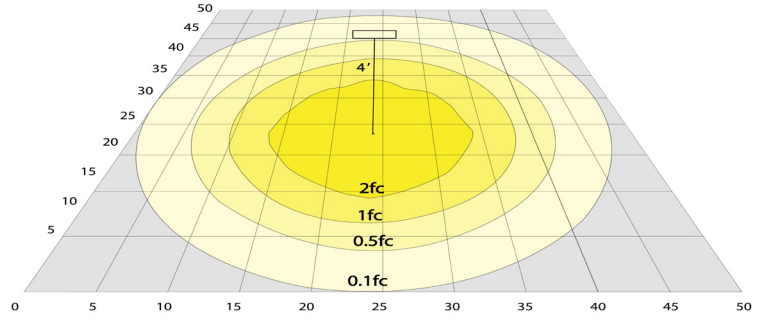
- 22W | 2860LM | BOL-42-S-C-C-MCTP-BK



Photometrics: BOL-42-S-C-C-MCTP-BR



BUD Rating: B1-U3-G2

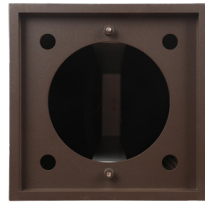


Area 75'x 65' Mounting Height: 9'

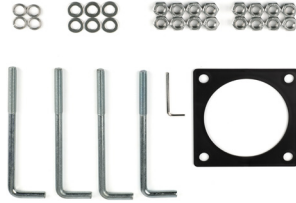
Other Views:



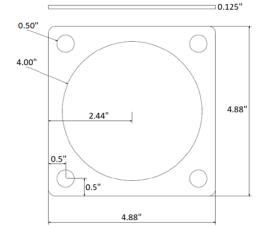
Lens View



Bottom View



Mounting accessories Included



Mounting Template
4.88"H x 4.88"W x 0.125"D

Performance Table: BOL-42-S-C-C-MCTP-BR

MODEL NO.	Wattage	Voltage	Lumens	Color Temp.	BUG Rating	LPW
BOL-42-S-C-C-MCTP-BR	12W	120~277V	1500LM	3000K 4000K 5000K	B1-U3-G2	130
			1620LM			
			1560LM			
	16W		2000LM			
			2160LM			
			2080LM			
			2750LM			
	22W		2970LM			
			2860LM			

Sample Ordering

Model Height Top Shape Reflector Lens Type Watt/Color Temp. Housing

BOL - 42 - S - C - C - MCTP - BR

Example:

1. BOL-42-S-C-C-MCTP-BR

(FOR BOL 22W MCTP FIXTURE 120-277V)

